

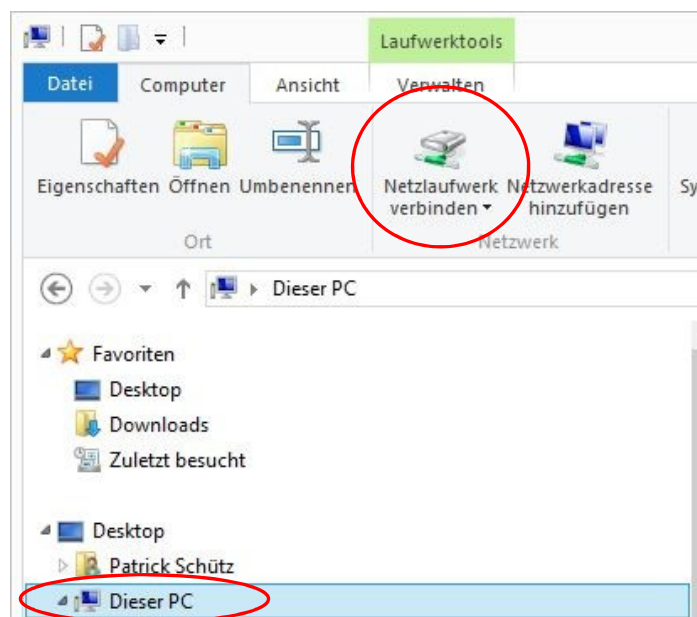
„WebDAV“- connecting

Instruction WebDAV (Windows)	2
Instruction WebDAV (Mac).....	6

Instruction WebDAV (Windows)

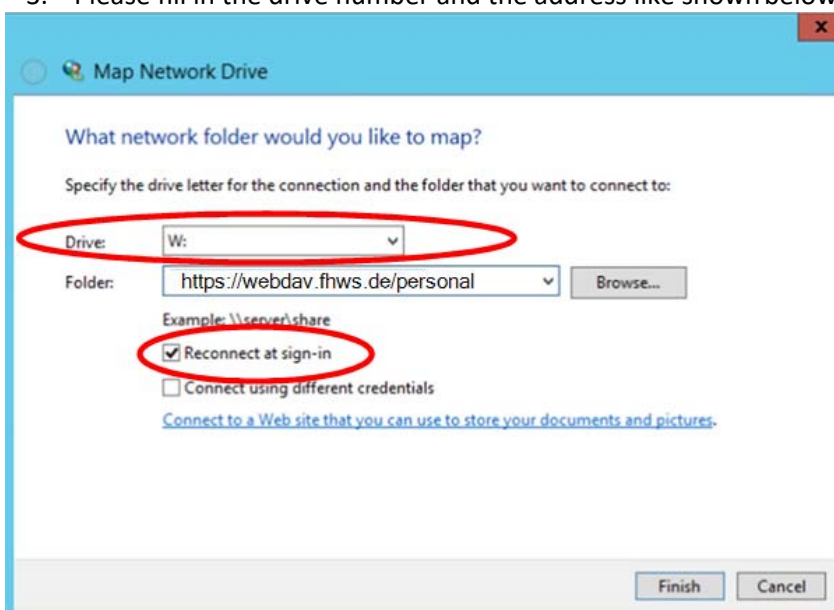
To set up WebDAV access (HOME-Laufwerk = **personal drive** und/oder OU Laufwerke = **department drive**) to your computer please follow the instruction below.

1. Open the Windows Explorer and select the folder „Dieser PC“/This PC (if you are using Windows 8) or “Computer” (if you are using Windows 7).
2. Then choose „Netzlaufwerk verbinden“/Network Drive .



A new window will open up.

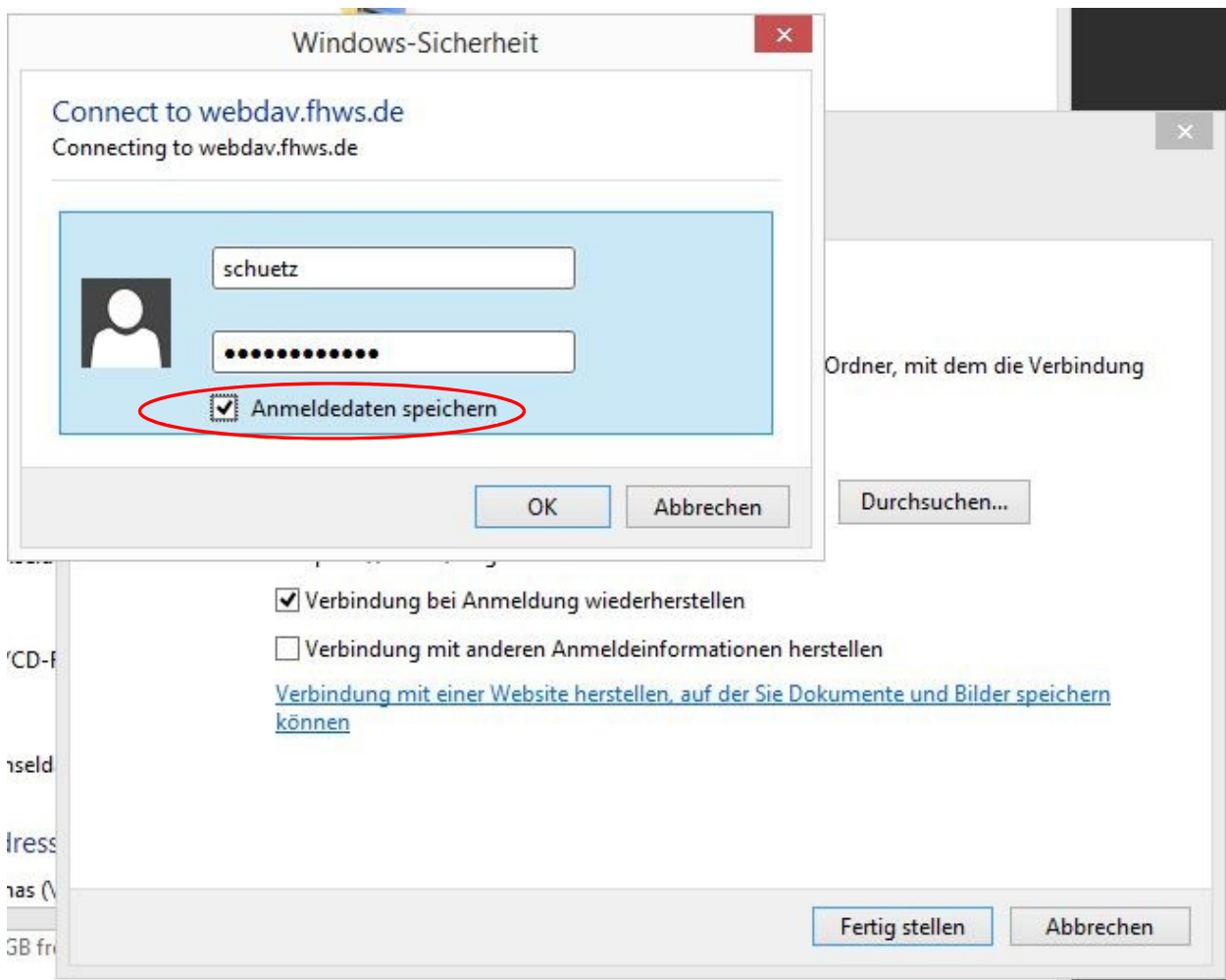
3. Please fill in the drive number and the address like shown below.



File Access with WebDAV-Drive

To connect to the HOME drive (**persönliches Laufwerk/personal drive**) fill <https://webdav.fhws.de/personal> into the "Ordner" section. Alternatively or in addition you can connect to the OU-drive (**Abteilungslaufwerke/department drive**) by filling in <https://webdav.fhws.de/ou>.

For the FHWS-Cloud fill in <https://cloud.fhws.de/remote.php/webdav/>. The drive number is arbitrary. To connect automatically without having to fill in the password every time, activate **„Verbindung bei Anmeldung wiederherstellen“**. After selecting **„Fertig stellen“** the Login Window will appear. Please fill in the register information (domain-user and password)



4. After you logged in, the Windows Explorer will show the new integrated index with the chosen drive number.

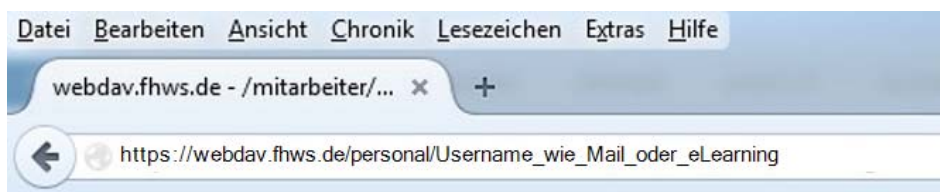
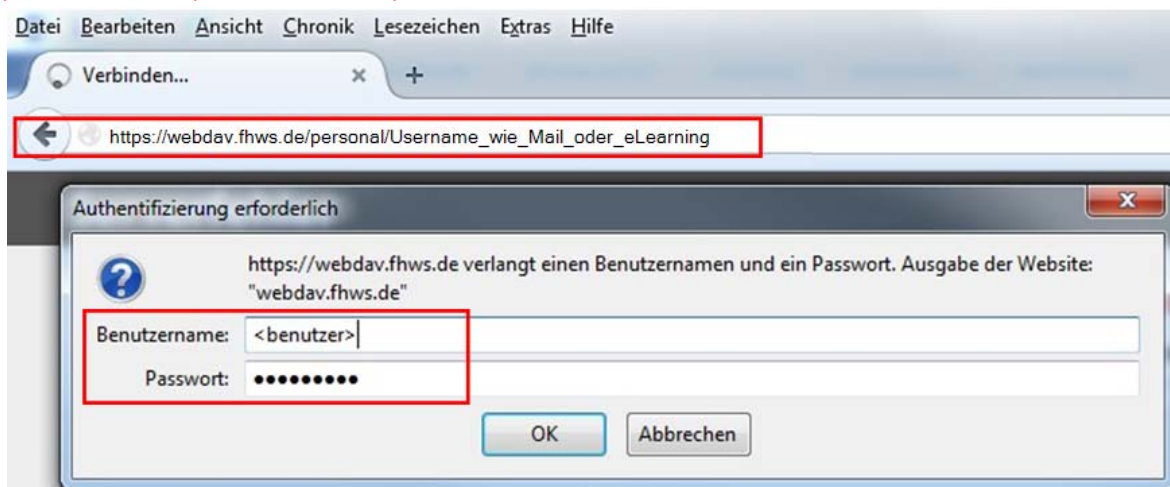
> personal (\\webdav.fhws.de@SSL\DavWWWRoot) (W:)

Here has to be searched for the personal Homeindex (most the surname). The files can be up- and down loaded.

Display the WebDAV-Drive with an internet browser

To access the content of your WebDAV-drive from any computer please insert <https://webdav.fhws.de/personal> or <https://webdav.fhws.de/ou> into the search field and fill in your Username and Password. Please notice that you can only download – It is not possible to upload files.

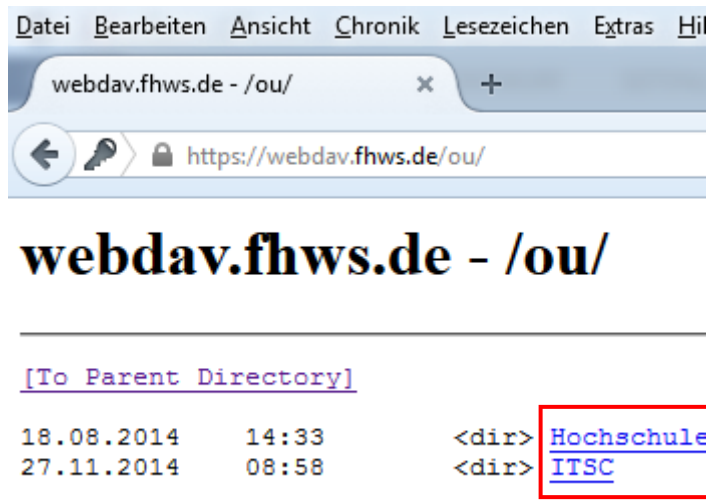
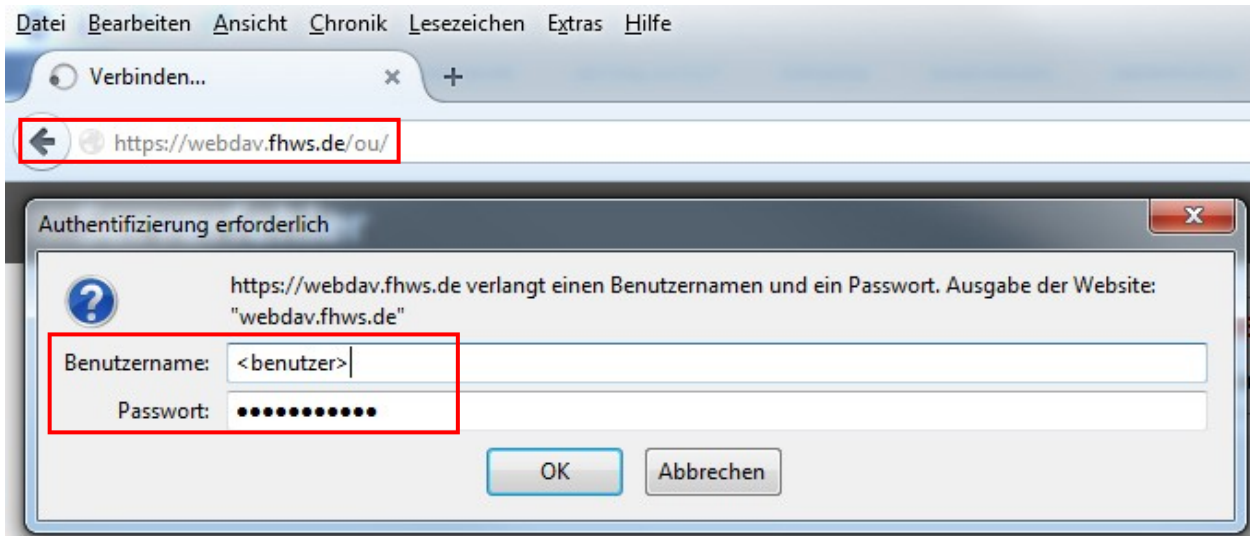
Make sure you do NOT save the password and logout when you login from a computer which is not yours, so nobody else can access your data.



[\[To Parent Directory\]](#)

10.07.2014	11:35	<dir>	Ab
17.11.2015	23:34	<dir>	Ab
06.03.2014	09:36	<dir>	Da
05.02.2015	15:09	2197154	DS
15.10.2015	09:42	<dir>	FC
29.05.2015	21:13	120	la
16.04.2015	13:08	1244	ms
05.02.2015	15:21	0	Ne
05.03.2014	16:54	<dir>	Pu
16.04.2015	13:15	2238	vm
09.06.2015	12:03	<dir>	WI

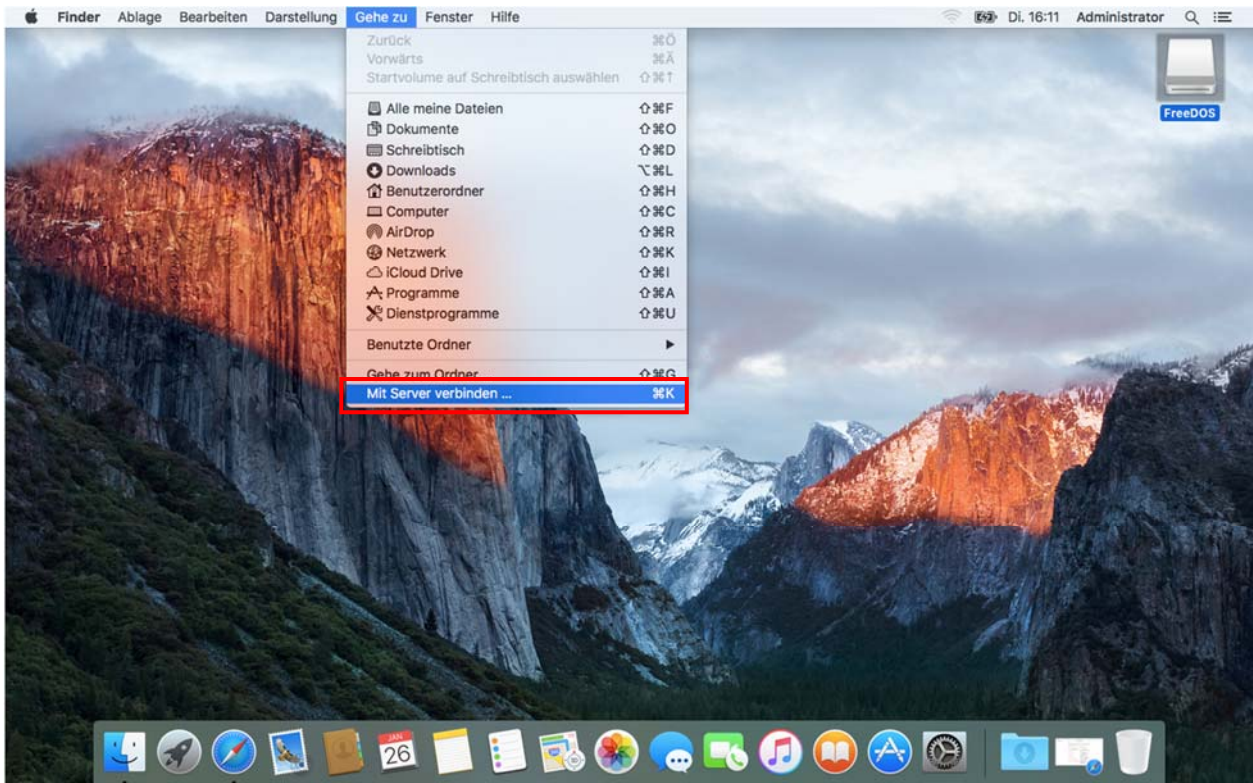
File Access with WebDAV-Drive



File Access with WebDAV-Drive

Instruction WebDAV (Mac)

To set up WebDAV access to your computer please follow the instruction below.



To access the cloud please go to :

